

D. SZOSTAKOWICZ

Symfonia nr 1

Allegretto

19

I solo



p espress.

III, IV *ff*

24

I, II a 4

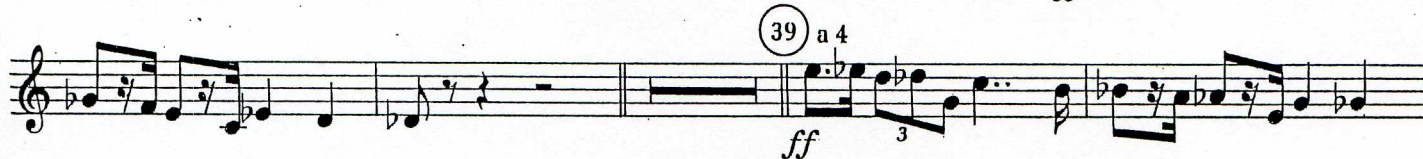
3



39 a 4

ff

3



I

p

pp



Allegro (cz. II)

21



Lento (cz. III)

21 (4) a 4

Rg F I, II III, IV

mf molto espress.

Musical score for Lento (cz. III). It consists of two staves. The first staff is in treble clef with a common time signature (C). It starts with a whole rest, followed by a series of eighth and sixteenth notes, some beamed together. There are dynamic markings like 'mf molto espress.' and '3' indicating triplets. The second staff is also in treble clef and contains triplet markings and various note values.

Allegro molto (cz. IV)

18

Rg F I, II III, IV

ff

Musical score for Allegro molto (cz. IV). It consists of two staves. The first staff is in treble clef with a 2/4 time signature. It features a series of eighth and sixteenth notes, some beamed together, with a dynamic marking of 'ff'. The second staff continues the melody with triplet markings and various note values.

Meno mosso

19 (22) I solo

sf p espress. poco a poco cresc.

dim. pp

a 4

Musical score for Meno mosso. It consists of two staves. The first staff is in treble clef with a common time signature (C). It starts with a whole rest, followed by a series of eighth and sixteenth notes, some beamed together. There are dynamic markings like 'sf', 'p espress.', 'poco a poco cresc.', 'dim.', and 'pp'. The second staff continues the melody with triplet markings and various note values.

Presto

29 I, a 2 II

ff

Musical score for Presto. It consists of two staves. The first staff is in treble clef with a common time signature (C). It starts with a whole rest, followed by a series of eighth and sixteenth notes, some beamed together. There are dynamic markings like 'ff'. The second staff continues the melody with triplet markings and various note values.